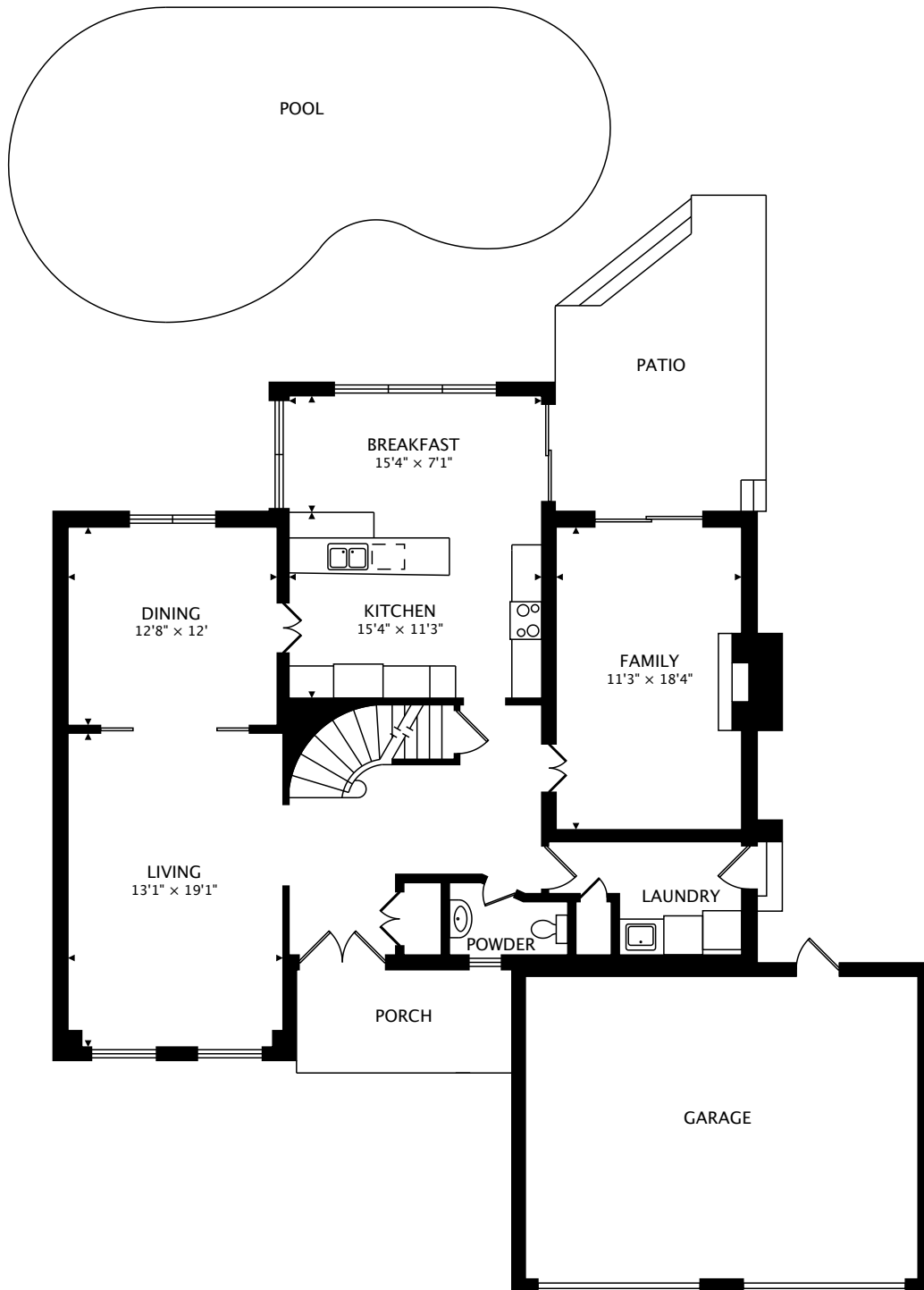


1510 BALLYCLARE DR
MISSISSAUGA, ON L5C 1J5

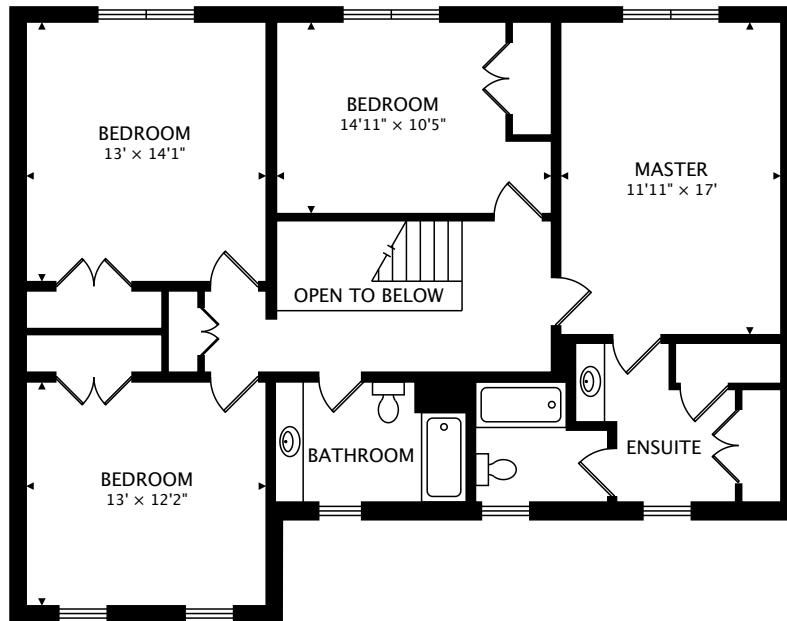


MAIN
1422 sq ft

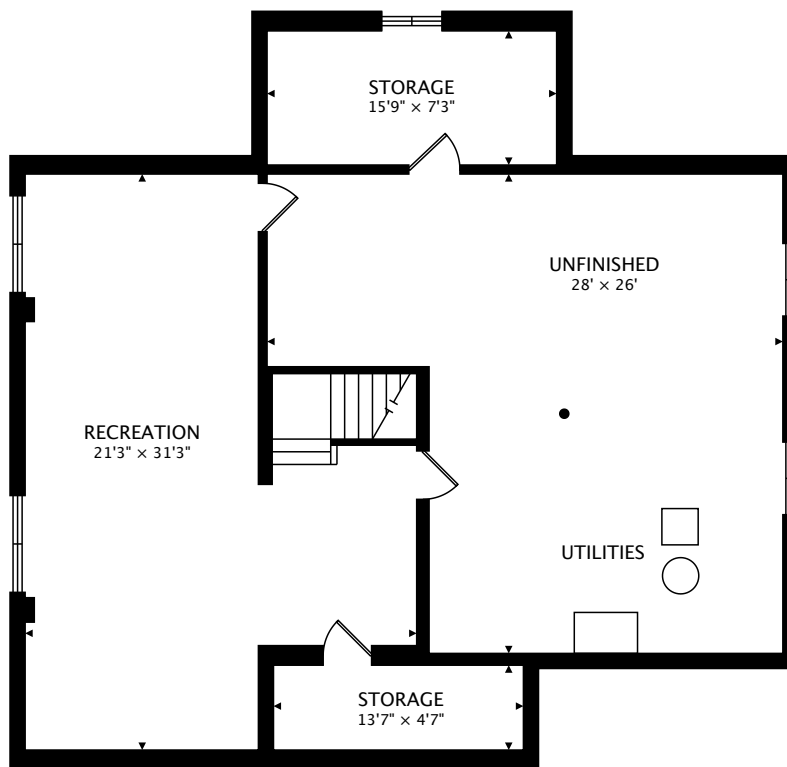
TOTAL
2643 sq ft + 1483 sq ft BELOW GRADE



CAPTURED ON: 7 MAR 2018
DIMENSIONS, AREAS, LAYOUTS AND DETAILS ARE APPROXIMATE
AND SHOULD BE CONSIDERED ILLUSTRATIVE ONLY.



SECOND
1222 sq ft



LOWER
1483 sq ft BELOW GRADE

TOTAL
2643 sq ft + 1483 sq ft BELOW GRADE